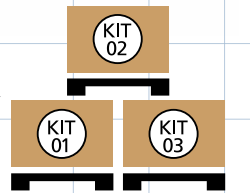
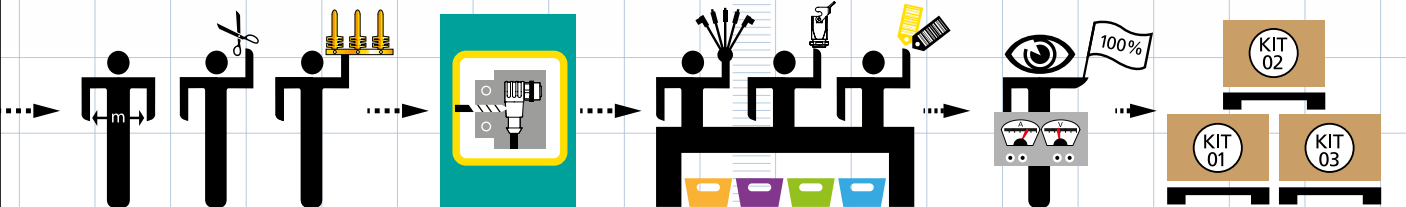
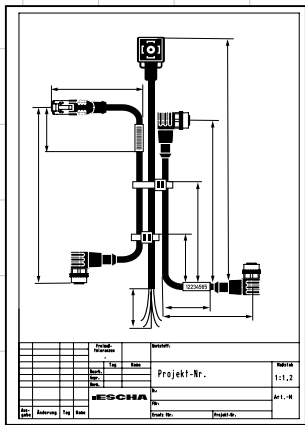
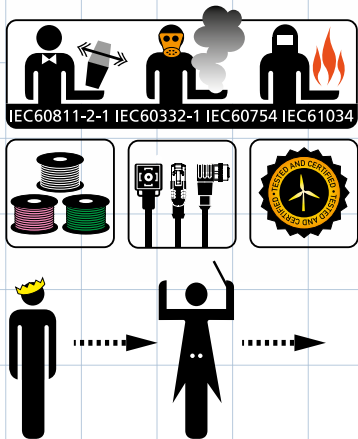
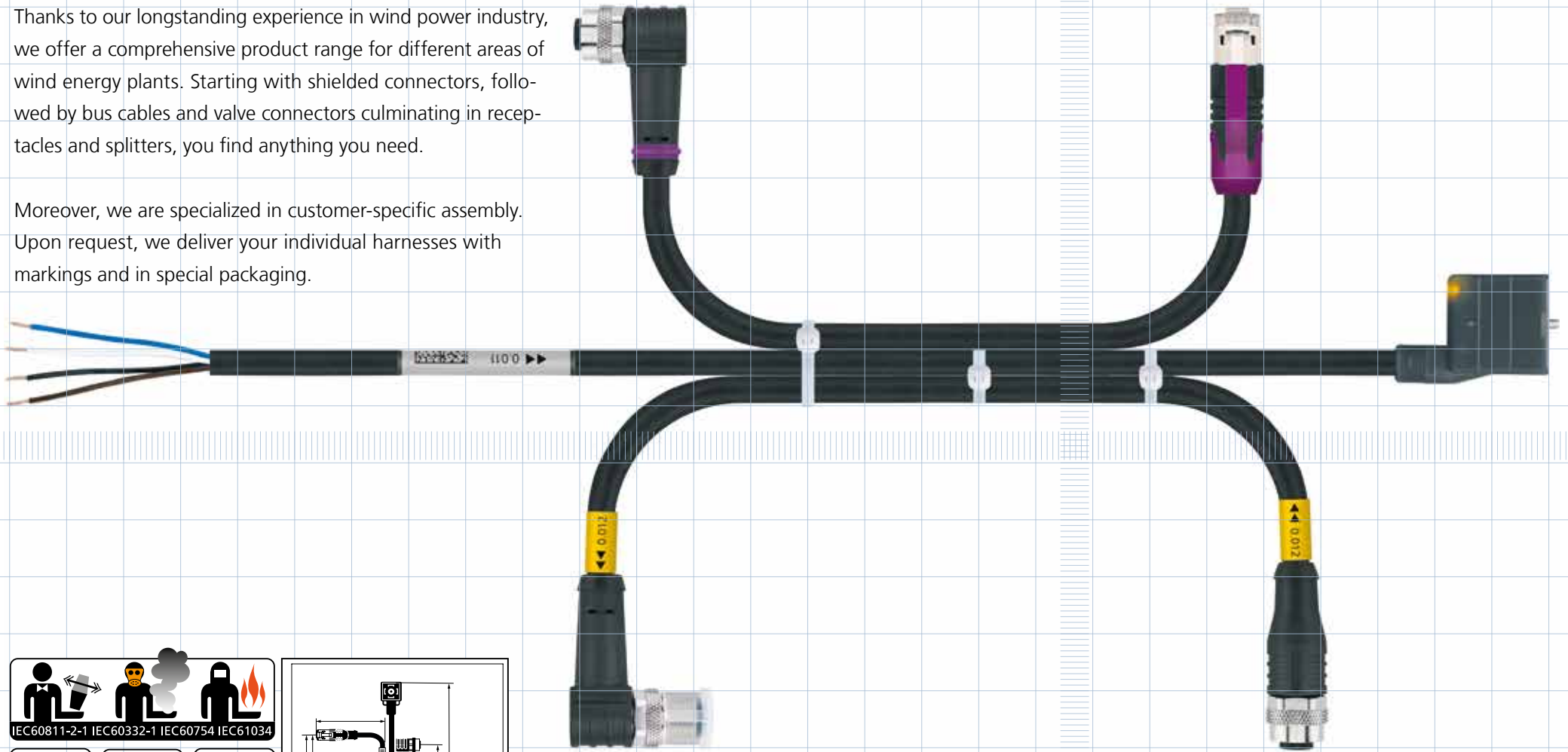


Connectivity solutions for wind turbines



Thanks to our longstanding experience in wind power industry, we offer a comprehensive product range for different areas of wind energy plants. Starting with shielded connectors, followed by bus cables and valve connectors culminating in receptacles and splitters, you find anything you need.

Moreover, we are specialized in customer-specific assembly. Upon request, we deliver your individual harnesses with markings and in special packaging.



ESCHA products for wind turbines

- M8, M12 shielded connecting cables and pigtails
 - Bus cables CAN, Profibus, Profinet (200Mbit/s, 1Gbit/s)
 - Valve plugs according DINEN 175301-803 also with shielded cables
 - M8, M12 receptacles, Y-splitters, T-pieces
 - Customer-specific assembly
 - Cable bundles, kit sets or special packaging
 - Harnesses
- Patented ESCHA two-shell shielding concept (2SSK) for M8-/M12-connectors: safe 360°-shielding in spite of high vibration loads
 - Low transfer impedance
 - HALT test approved
 - Hydraulics-, mineral oil-, lubricants resistant according to IEC 60811-2-1
 - Low smoke zero halogen (LSZH), Halogen free according to IEC 60754
 - Flame retardant according to IEC 60332-1/-2
 - Smoke density according to IEC 61034-2
 - Corrosiveness of toxic gases according to IEC 607542-1/-2
 - UL/CSA approved

